



Partnering for Success Enhancing Capacity in Early Intervention

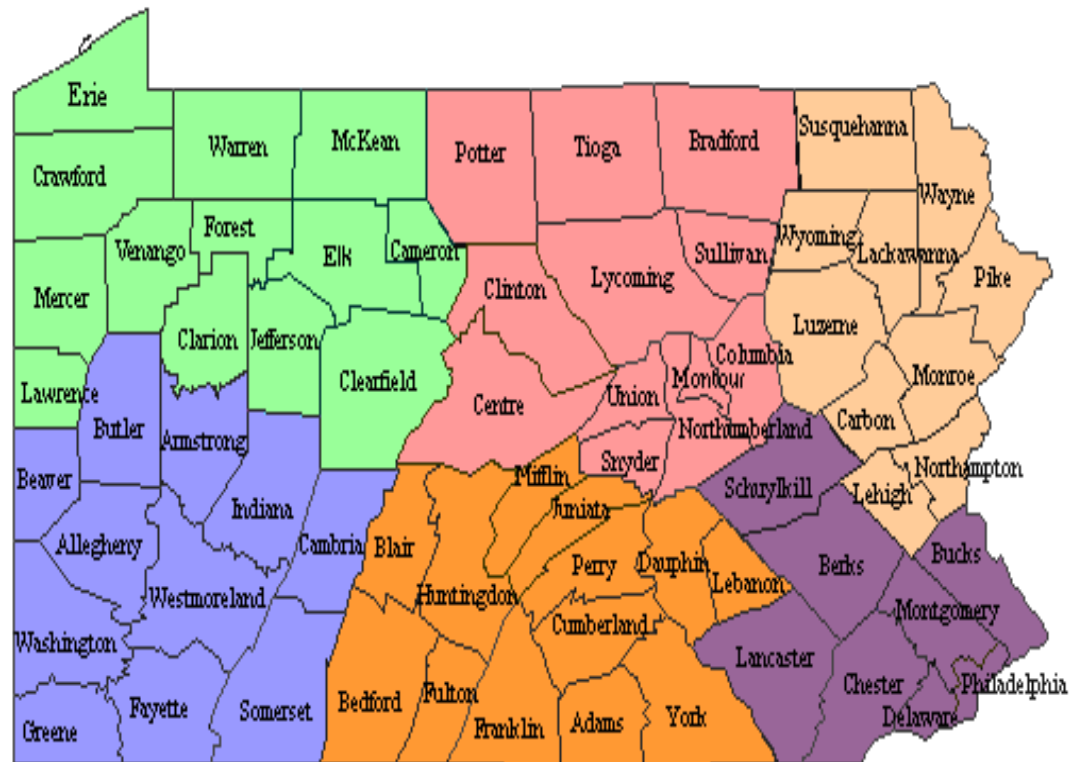
**2009 Annual Early Hearing Detection & Intervention (EHDI) Conference
Addison, Texas
March 9-10, 2009**

**Presented By: Susan Kershman: Ph.D. – EITA, PaTTAN
Mary King-Maxey: PA EHDI Program Manager
Arthur A. Florio: PA EHDI Program Administrator**



Pennsylvania Fast Facts

- ❖ Population
12,440,621
- ❖ 44,817 square
miles
- ❖ 67 Counties and
2,567
municipalities
- ❖ 48 of 67 counties
are rural
- ❖ 1/3 of the
population lives in
a rural area





Pennsylvania EHDI Program

- ❖ **1999 – began demonstration program in 26 birthing hospitals**
- ❖ **Infant Hearing Education, Assessment, Reporting and Referral Act (IHEARR) passed in November 2001**
- ❖ **Statewide program implemented July 1, 2002**
- ❖ **All 112 birthing hospitals in PA Screen for Hearing Loss**
- ❖ **146,000 hospital births per year**
- ❖ **3,800 out-of-hospital births per year**



Act 89 of 2001

The Infant Hearing Education, Assessment, Reporting and Referral Act (IHEARR)

- ❖ Establishes a statewide EHDI Program
- ❖ Requires hospitals to report hearing screening results to the Department of Health
- ❖ Requires the Department of Health to Implement a Reporting and Early Intervention Referral Program
- ❖ Provides for Education and Outreach Efforts
- ❖ Establishes an Infant Hearing Screening Advisory Committee



2007 PA EHDI Numbers

- ❖ Total Occurrent Births 150,001
 - ❖ Hospital Births 146,196
 - ❖ Out-of-Hospital Births 3,805
- ❖ 112 Hospitals With A Newborn Hearing Screening Program
- ❖ 20 Out-of-Hospital Birth Hearing Screening Networks
- ❖ 143,568 (or 95.7%) Completed Hearing Screening



2007 PA EHDI Numbers

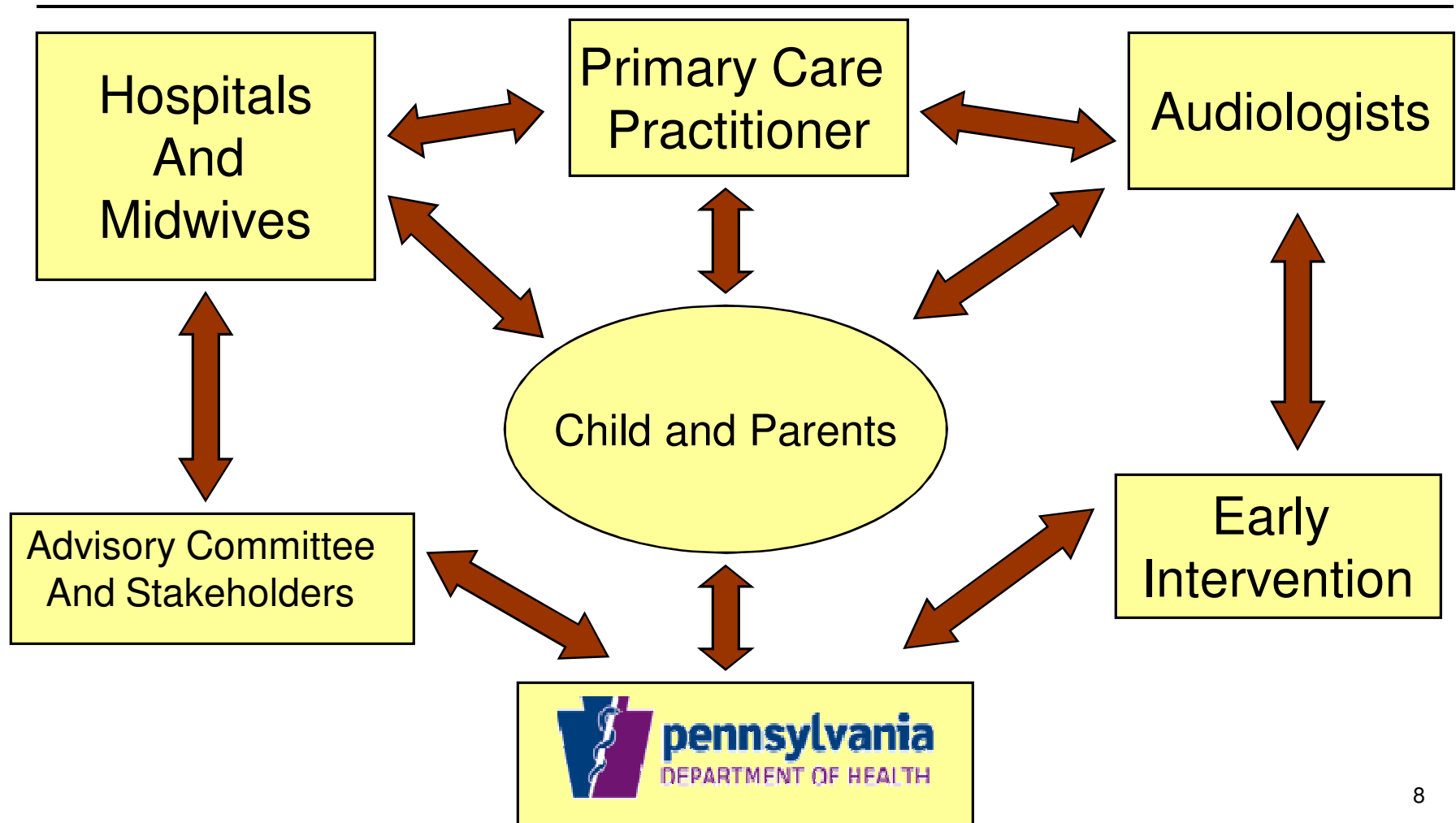
- ❖ 154 - Diagnosed With Permanent Hearing Loss
- ❖ 118 - Diagnosed With Non-permanent Conductive Hearing Loss



Newborn Being Screened by a Midwife in the Amish Community



The PA EHDI Team





PA Early Intervention Numbers

❖ EITA/PaTTAN (www.pattan.net)

❖ Early Intervention Statistics:

❖ 2 lead agencies: Departments of Education & Public Welfare

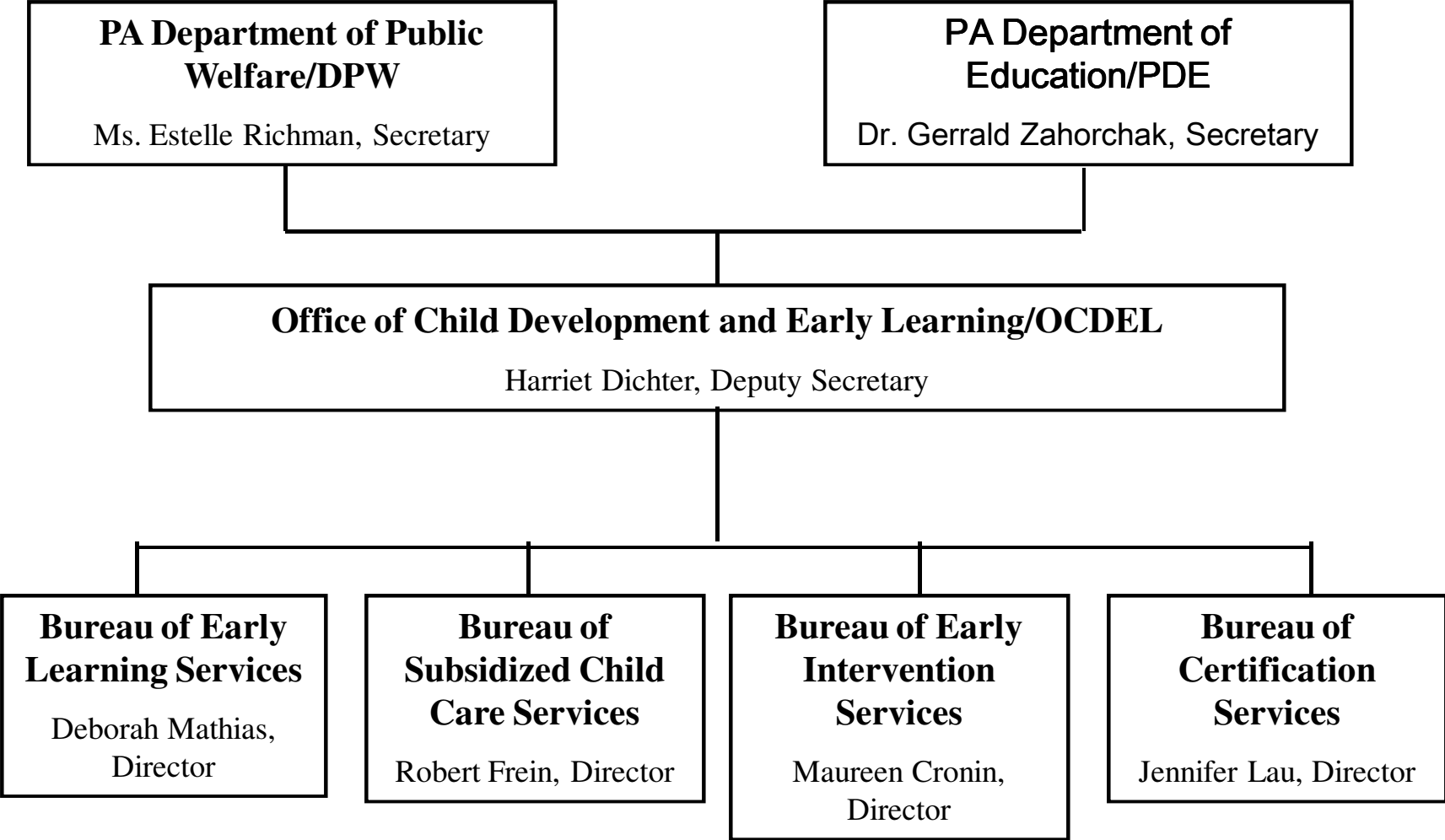
❖ Office of Child Development & Early Learning/OCDEL

❖ Bureau of Early Intervention Services

❖ Locally: Infants/Toddlers (B-3) & Preschoolers (3-5)

❖ Children served	<u>2006-07</u>	<u>2007-08</u>
❖ Infants & Toddlers	29,848	31,963
❖ Preschoolers	39,477	41,637

Restructuring Early Childhood Education in PA





New Developments

- ❖ PA Learning Standards for Early Childhood (Infants-Toddlers, Pre-K, K & grade 1, 2 & 3)
- ❖ ECAP (Early Childhood Accountability in PA)
- ❖ Forms:
 - ❖ Evaluation Report; IFSP/IEP; Procedural Safeguard forms (www.pattan.net)



New Developments

- ❖ EI Management Verification Tool; Provider & Service Coordinator Monitoring tools
- ❖ Joint Training & Technical Assistance planning, Birth to 5
- ❖ PELICAN: PA's Enterprise to Link Information for Children Across Networks



Deafness/Hearing Loss in PA

- ❖ OCDEL Announcement January 2009:
Recommendations for Children Who Are Deaf or Hard of Hearing (DHOH)
- ❖ Annual PA Low Incidence Institute
 - ❖ Great Start, August, State College
- ❖ Department of Health, Early Head Start Hearing Screening



DOH/NBHS & EITA Activities

(3 year contract)

- ❖ 6-Workshop tours of PA (3 in 2 years)
- ❖ Short-Term Loan Kits
- ❖ Web-based course for Service Coordinators
- ❖ Web-based data collection (B-3 sample)



DOH/NBHS & EITA Activities

(3 year contract)

- ❖ Parent Resource Guide
- ❖ Annual Review of IFSP/IEPs
- ❖ Annual Parent Satisfaction Survey



DOH & EITA

Parent Satisfaction Survey '08

- ❖ Demographics
- ❖ Experiences before and in EI
- ❖ Quality Ratings and Satisfaction
- ❖ Comments



Demographics: Surveys Returned

Rate of Return

- ❖ 326 surveys sent
- ❖ 123 surveys returned (38%)

County Representation

- ❖ 119/123 surveys included the County Name
- ❖ 41 of 67 counties were represented
- ❖ Range: from 1 to 12 responses per county



Demographics: Surveys Returned

1. Relationships to child:

108 Mothers

8 Fathers

3 Grandmothers

2 Foster Parents

N = 121



Before Early Intervention

2. My child was first screened for a hearing loss at birth or before s/he was 1 month old.

	<u>N =</u>	<u>%</u>
a. Yes	113	92%
b. No	10	8%

Before Early Intervention: 3. After the first screening for a hearing loss, what happened next?

	<u>N =</u>	<u>%</u>
We returned to the hospital for a second hearing screening	54	45%
My child's doctor tested my child's hearing in his/her office.	2	2%
We returned to the hospital Audiology Department for testing.	21	17%
We were referred to an Audiologist outside of the hospital for testing.	28	23%
Other	16	13%

Before Early Intervention 4. My child was first seen by an audiologist for a hearing test:

	N =	%
Before my child was 3 months old	88	72%
Before my child was 6 months old	19	15%
Before my child was 9 months old	4	3%
Before my child was 1 year old	4	3%
After my child was 1 year old	8	7%



Demographics:

Child's Age Beginning EI (Q #24)

	<u>N =</u>	<u>%</u>
Birth – 3 months	32	26%
4 - 6 months	53	44%
7 - 9 months	16	13%
10 - 12 months	10	8%
13 months -2 years	10	8%
25 months -3 years	1	1%



Remarkable Results (1)

98% said:

- ❖ Their children were assessed in all developmental areas (Q #12)
- ❖ They were satisfied that their family's daily routines were considered when planning for their child's EI services (Q #17)
- ❖ They were satisfied with the quality of information they received about early development of hearing, speech and language (Q #14 &15)



Remarkable Results (2)

- ❖ 97% expressed overall agreement that they were satisfied with their children's Early Intervention Services (Q #21)



Remarkable Results (3)

95% of respondents said

- ❖ Their family's routines were considered in planning and implementing services (Q #13)
- ❖ They were satisfied with the level of knowledge and professionalism of their EI service coordinator (Q #19)
- ❖ They were given access to at least one staff person in EI qualified in deafness and hearing loss, such as a teacher of the deaf or SLP (Q #5)



Remarkable Results (4)

- ❖ 92% of respondents said their child had a hearing screening at birth or before 1 month of age (Q #2, Before EI)



Areas for Improvement (1)

- ❖ 44% reported that they were given opportunities for contact with adults who are deaf or hard of hearing (Q #7)



Areas for Improvement (2)

- ❖ 70% of respondents said their child began to receive EI services by 6 months of age (Demographics)
- ❖ 72% said their infants were seen by an audiologist by 3 months of age; another 15% by 6 months of age (Q #4 Before EI)



Areas for Improvement (3)

- ❖ 73% reported they were given information about national, state and local organizations related to deafness and hearing loss (Q #11)



Areas for Improvement (4)

- ❖ 78% said they were given opportunities for contact with other parents of children with deafness or hearing loss (Q #6)



Summary: Areas of Strength

1. Screening at birth or before 1 month
2. Access to teacher of the deaf or SLP
3. Children being assessed comprehensively
4. Considering family routines
5. Information on the early development of hearing skills, speech and language
6. Quality of written information
7. Satisfaction with knowledge and professionalism of SCs
8. Overall satisfaction with EI



Summary:

Areas for Improvement

- ❖ Child's age at beginning in EI
- ❖ Child's age at first seeing an audiologist
- ❖ Opportunities for contact with adults who are deaf or hard of hearing as well as with other parents
- ❖ Information about national, state and local resources related to deafness and hearing loss
- ❖ Information about several different communication options



Strategies for Improvements

- ❖ Resource Fairs at workshops
- ❖ Parent Resource Guide (print, online)
- ❖ Audiology resources online
- ❖ Guide By Your Side program
- ❖ Local Workgroup on LTF

Presenter Contact Information

Susan M. Kershman, Ph.D., Consultant
Early Intervention Technical Assistance/EITA
Pennsylvania Training & Technical Assistance Network/PaTTAN
200 Anderson Road
King of Prussia, PA 19406
800-441-3215 or 610-265-7321 Ext. 7248

Mr. Arthur A. Florio
Division of Newborn Screening & Genetics
Pennsylvania Department of Health
7th Floor East Wing
625 Forster Street
Harrisburg, PA 17120-0701
Phone: 717.783.8143 - Fax: 717.772.0323
aflorio@state.pa.us

Ms. Mary King-Maxey
Chief Newborn Hearing Screening
Division of Newborn Screening & Genetics
Pennsylvania Department of Health
7th Floor East Wing
625 Forster Street
Harrisburg, PA 17120-0701
Phone: 717.783.8143 - Fax: 717.772.0323
mkingmaxey@state.pa.us